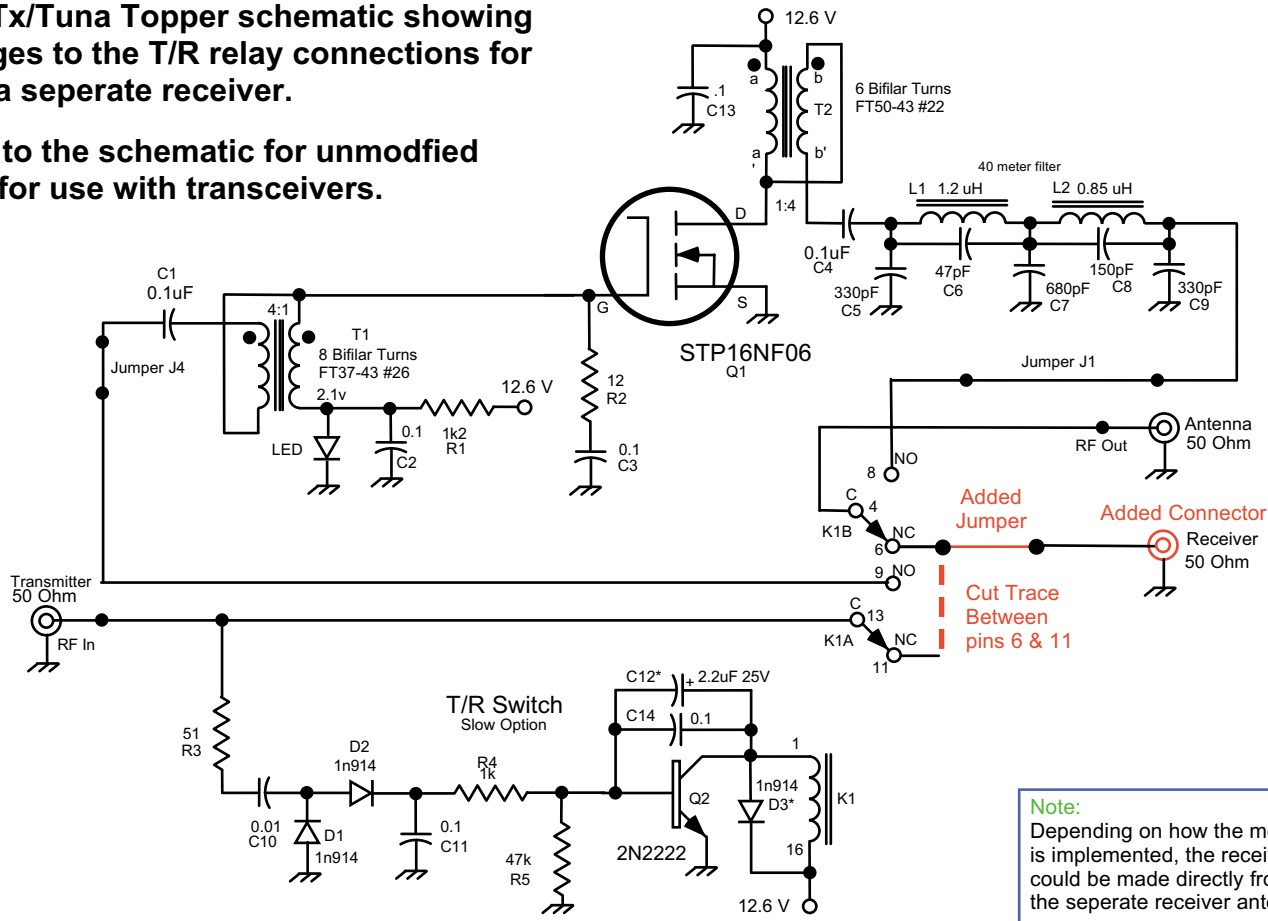
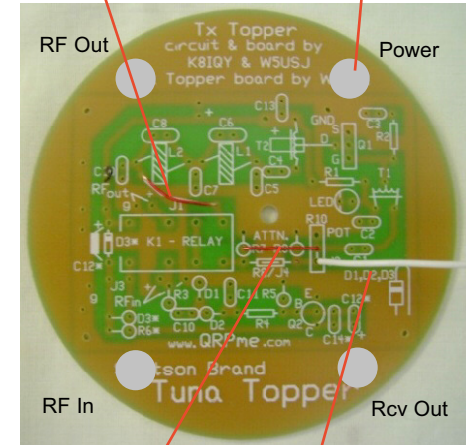


**Revised Tx/Tuna Topper schematic showing the changes to the T/R relay connections for use with a separate receiver.**

**Compare to the schematic for unmodified 'Toppers for use with transceivers.**



Jumper J1 is always used. Some Topper PCBs may have holes punched for RCA jacks



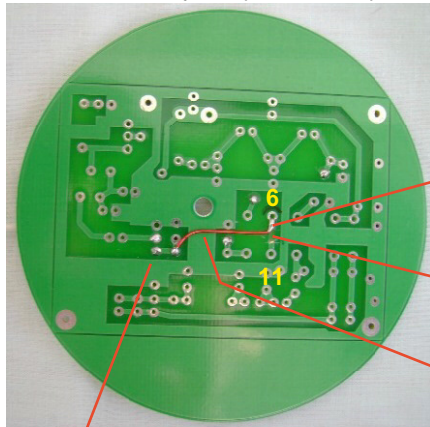
Jumper J4 is used here when no attenuator used

Added lead for separate receiver antenna jack.

If RCAs are used this wire can be connected directly to Rcv Out from the bottom side of the board

**Note:** Depending on how the mod is implemented, the receiver connection could be made directly from pin 6 to the separate receiver antenna jack

Make 2 cuts in the trace between pins 6 and 11 of the T/R relay. Strip out a short piece.



Leave about 1/8 in trace and gently scrape clean for soldering end of the added jumper

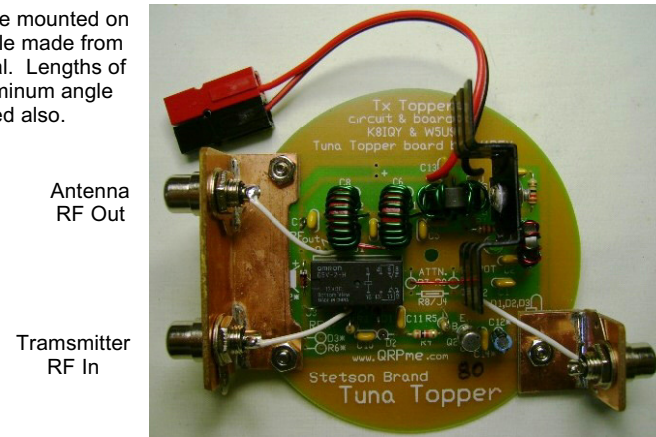
Cut the trace and remove about 1/16 inch

Connect an insulated wire jumper from the trace next to pin 6 and the R9 hole next to the J2 pads.

Connect the receiver antenna lead to the bottom hole of the J2 pads.

The jacks are mounted on 3/4 inch angle made from PCB material. Lengths of 3/4 inch aluminum angle could be used also.

A mod option if holes are not punched for RCAs



**Note:** Make sure there are good ground connections from the jacks and the ground inside the line around the amplifier circuit. The wings are not connected to the amplifier ground.

Receiver Ant In