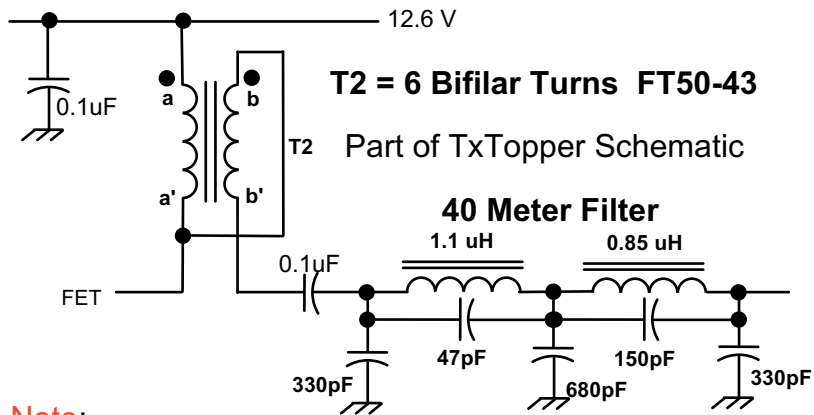


TxTopper Bifilar T2 W5USJ Drawing rev 12 Dec '08

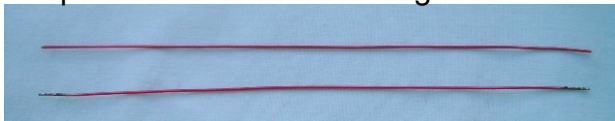


Note:

T1 is 8 turns on an FT37-43 toroid. The procedure is the same as T2 otherwise. T1= 4:1 stepdown, T2= 1:4 stepup.

Bifilar Transformer Winding:

Prepare 2 wires 6 inches long - T1 and T2



If both wires are the same color...

Tin or otherwise mark the ends of 1 wire

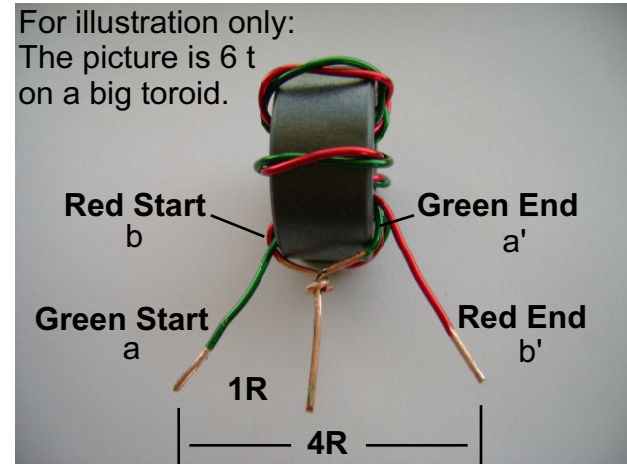
Twist both wires together ~2-3 turns per in.



Wind the number of turns needed. Either direction. Extend the wire ends about 1/2 in or so on each side to make connections. Refer to the drawing. Strip, tin and cut lead to length to install.



Finished bifilar transformer

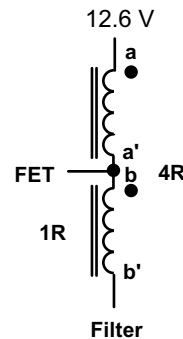


For illustration only:
The picture is 6 t on a big toroid.

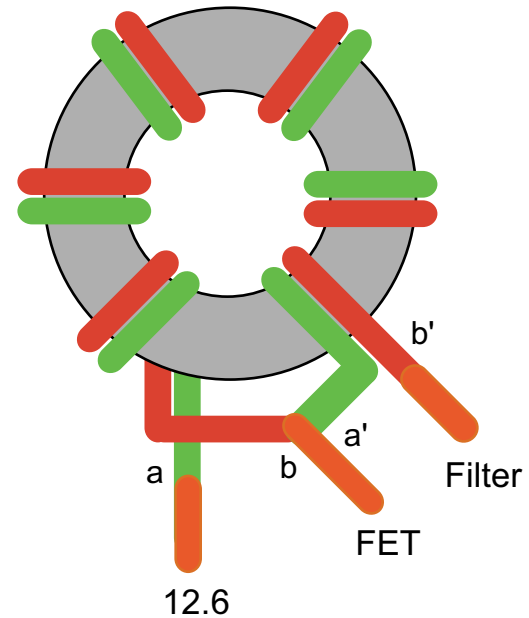
Center Tap
Connect Red Start b to Green End a'

Clearly mark the ends of one wire if both are the same color.

T2 Impedance Stepup



Auto Transformer
2:1 turns ratio, 4:1 Impedance Ratio



Connect bifilar windings as shown in the illustration